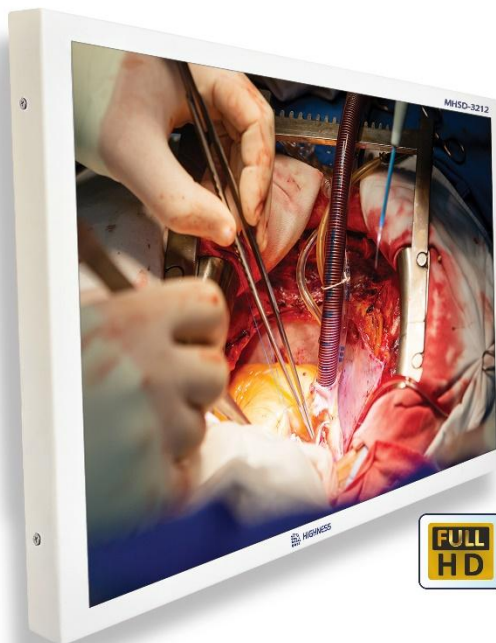




## MHSD-3200WST

32" Medical Grade Workstation With  
Multi-Point Touch Screen



**Applications:**

Endoscopy

Laparoscopy

Digital OR

Rev.01  
Update Date  
04<sup>th</sup> Jan 2024

---

THIS DOCUMENT CONTAINS PROPRIETARY INFORMATION WHICH IS SOLELY OWNED BY 'HIGHNESS MICROELECTRONICS LTD'. ANY UNAUTHORISED COPY OR PRINTING OR PUBLISHING OF INFORMATION IN THIS DOCUMENT IN PART OR IN COMPLETE IS RESTRICTED.

---

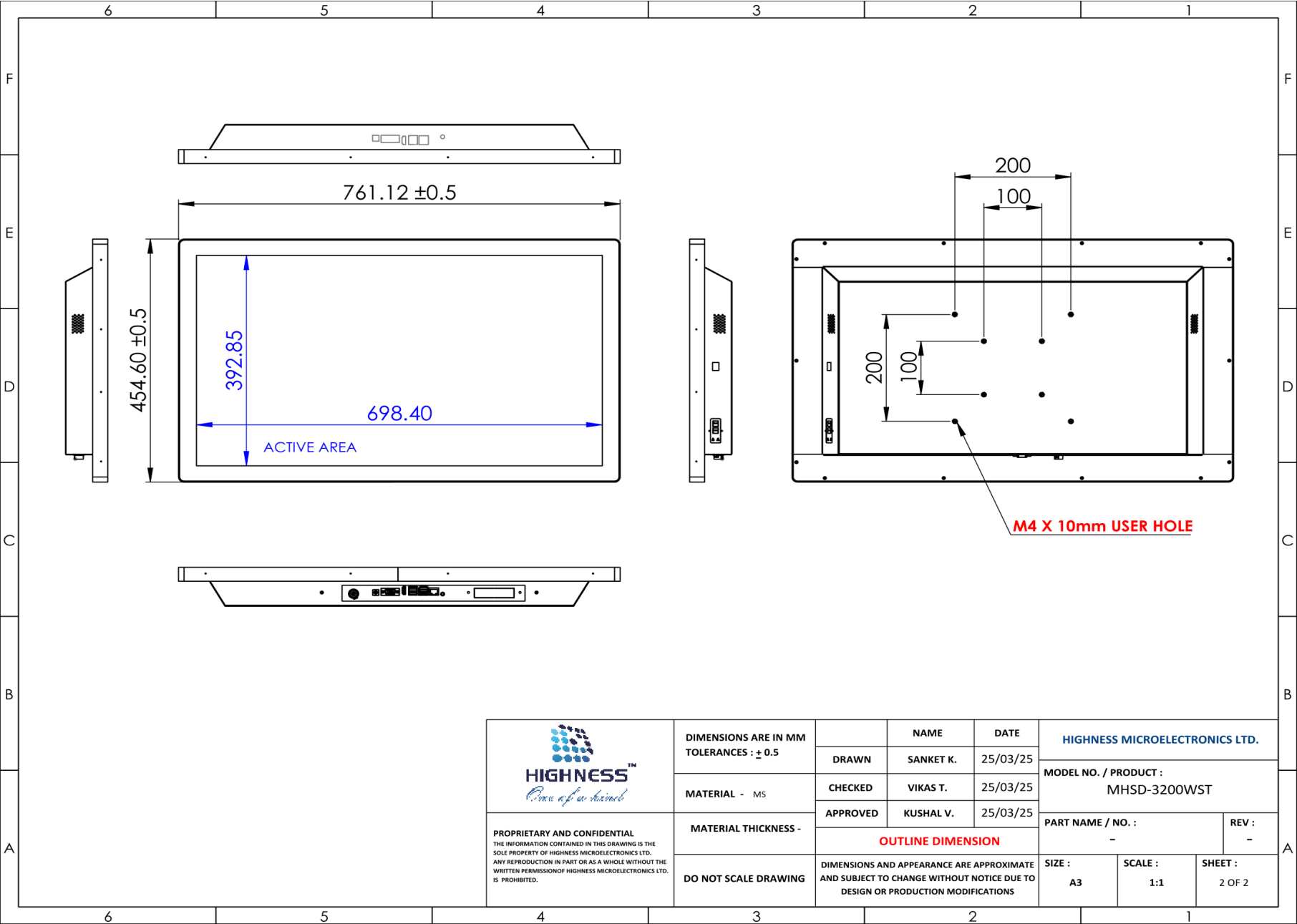
**HIGHNESS MICROELECTRONICS LTD.**

URL: [www.highnessmicro.com](http://www.highnessmicro.com), Email: [sales@highnessmicro.com](mailto:sales@highnessmicro.com)

# 1. Technical Specification

Screen Size		32" diagonal
Active Area (H x V)		698.4 x 392.85 mm
Resolution		1920 x 1080
Aspect Ratio		16:9
Pixel Pitch (H x V)		121.25 x 363.75 $\mu$ m
Color		16.7Million
Viewing Angle		89°/89°/89°/89°
Luminance		350 cd/m <sup>2</sup>
Contrast		1200:1
Response Time		8ms
Operating Temperature		0° to +50° C
Storage Temperature		-20° to +60° C
Output Signals		HDMI/ VGA
In-Built System		Intel® Core™ i7 CPU@ 2.20GHz ~ 2.60GHz RAM 8GB (Expandable 16GB) 256GB SSD (Expandable 1TB)
I/O Port	USB	USB2.0, USB3.0
	COM Port	RS232/RS422/RS485 (Optional)
	Network	10/100/1000M Ethernet Controller Other Features- Wi-Fi, Bluetooth (Optional) Output Signal for Connecting to Slave/Passive Monitor
Surface Treatment		Multipoint Touch Screen (Optional)
		Toughened Glass (Optional)
Operating System		Windows 10 (Pre-Installed)
Power Input		DC 24V (6.67A)
Power Consumption		48W
Backlight Type		LED
Backlight Life		30,000 hours
Enclosure		Mild Steel / Aluminum
Weight		TBA
Mounting		Wall Mount/ VESA (200mm)

2. Mechanical Drawing



(Manufacturer reserves the sole right to change the specifications without prior notice)  
(Touch screen will reduce the original luminance of the LCD display)