



MHSD-2400NWST

23.8" Medical Grade Workstation With
Multi-Point Projected Touch Screen



Applications:

Endoscopy
Laparoscopy
Digital OR

Rev.01
Update Date
04th Jan 2025

THIS DOCUMENT CONTAINS PROPRIETARY INFORMATION WHICH IS SOLELY OWNED BY 'HIGHNESS MICROELECTRONICS LTD'. ANY UNAUTHORISED COPY OR PRINTING OR PUBLISHING OF INFORMATION IN THIS DOCUMENT IN PART OR IN COMPLETE IS RESTRICTED.

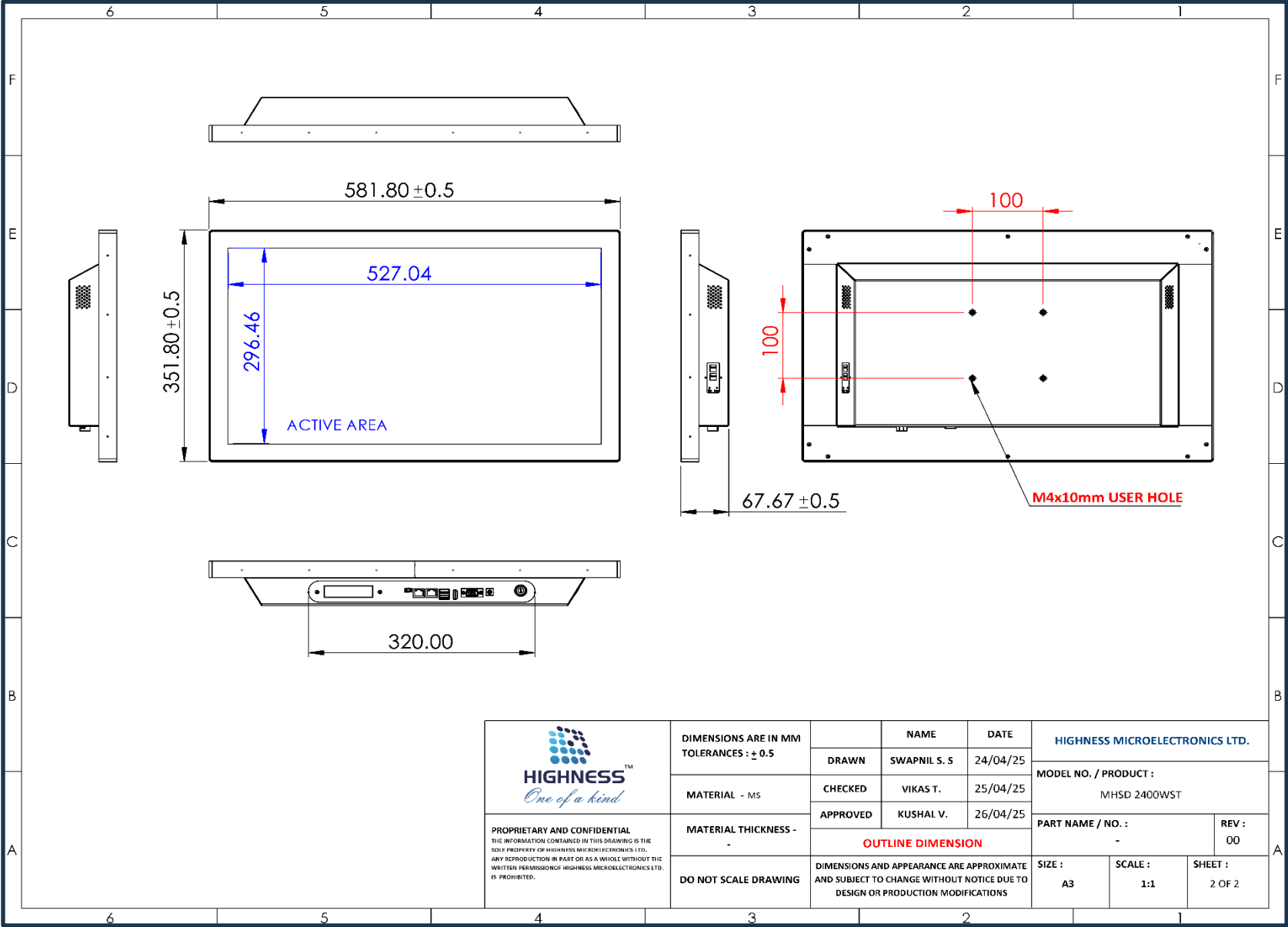
HIGHNESS MICROELECTRONICS LTD.

URL: www.highnessmicro.com, Email: sales@highnessmicro.com

1. Technical Specification

Screen Size		23.8" diagonal
Active Area (H x V)		527.04 x 296.46 mm
Resolution		1920 x 1080
Aspect Ratio		16:9
Pixel Pitch (H x V)		0.2745 mm
Color		16.7Million
Viewing Angle		89°/89°/89°/89°
Luminance		500 cd/m ²
Contrast		1000:1
Response Time		14ms
Operating Temperature		0° to +50° C
Storage Temperature		-20° to +60° C
Output Signals		HDMI/ VGA
In-Built System		Intel® Core™ i7 CPU@ 2.20GHz ~ 2.60GHz RAM 8GB (Expandable 16GB) 256GB SSD (Expandable 1TB)
I/O Port	USB	USB2.0
	COM Port	RS232/RS422/RS485 (Optional)
	Network	10/100/1000M Ethernet Controller
		Other Features- Wi-Fi, Bluetooth (Optional) Output Signal for Connecting to Slave / Passive Monitor
Touch Screen Type		10 Point Multipoint Touch Capacitive
Operating System		Windows 10 (Pre-Installed)
Power Input		DC 12V (5A)
Power Consumption		44W
Backlight Type		LED
Backlight Life		30,000 hours
Enclosure		Mild Steel / Aluminum
Weight		13.800 Kgs.
Mounting		VESA (100 mm)

2. Mechanical Drawing



(Manufacturer reserves the sole right to change the specifications without prior notice)
(Touch screen will reduce the original luminance of the LCD display)