



## 21.5" SURGICAL DISPLAY

### MHSD-2100RCT

Built-In Recording & Storage  
With Multipoint Touchscreen.



#### Applications:

Endoscopy  
Laparoscopy  
Digital OR

Rev.01  
Updated Version  
04<sup>th</sup> Jan 2025

---

THIS DOCUMENT CONTAINS PROPRIETARY INFORMATION WHICH IS SOLELY OWNED BY 'HIGHNESS MICROELECTRONICS LTD'. ANY UNAUTHORISED COPY OR PRINTING OR PUBLISHING OF INFORMATION IN THIS DOCUMENT IN PART OR IN COMPLETE IS RESTRICTED.

---

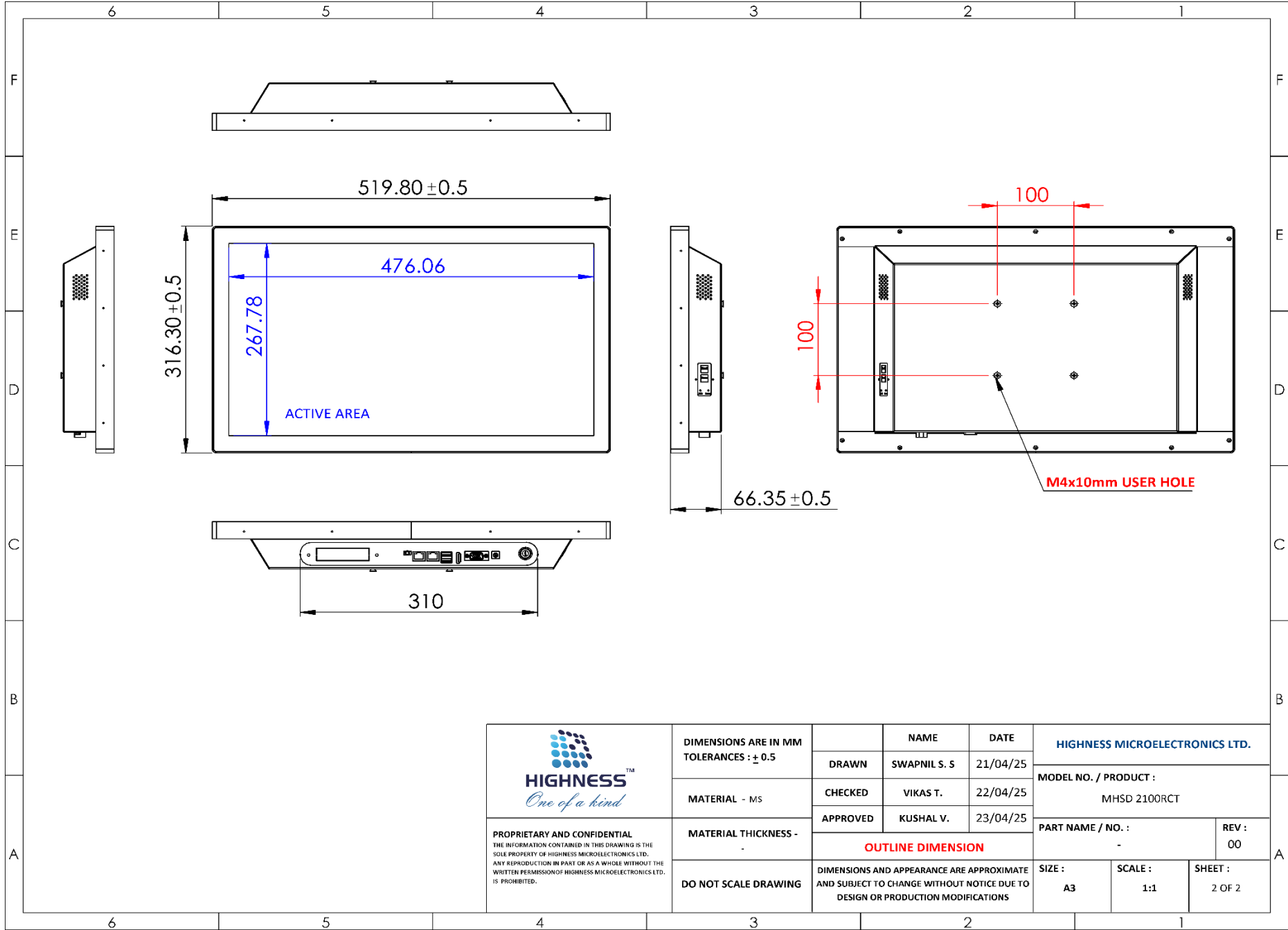
**HIGHNESS MICROELECTRONICS LTD.**

URL: [www.highnessmicro.com](http://www.highnessmicro.com), Email: [sales@highnessmicro.com](mailto:sales@highnessmicro.com)

## 1. Technical Specification

Screen Technology	TFT AM LCD
Active Screen Size (Diagonal)	21.5"
Active Screen Size (H x V)	476.064 x 267.786 mm
Aspect Ratio	16:9
Resolution	1920 x 1080
Pixel Pitch	0.24795 mm
Viewing Angle (H, V)	178°, 178°
Maximum Luminance	350 cd/m <sup>2</sup>
Contrast Ratio	1000:1
Color	16.7 Million
Response Time (Tr + Tf )	20 ms
Video Inputs Signals	HDMI
Interface Port	HDMI
Video Outputs Signals	HDMI/ VGA
Recording System	In-Built, Fully Integrated with Monitor 1TB Storage (Expandable to 2TB) Simultaneous Recording & Video Display
	Other Features - Recording Start & Pause Button Screenshot Button USB for Copying Recorded Videos Ethernet for Connectivity with Hospital / Clinic Network
	Optional Features - Wi-Fi, Bluetooth (Optional) Output Signal for Connecting to Slave / Passive Monitor
Built in Operating System	Windows 10 (Pre-installed), Recording Software
Touch Screen Type	Multi-Point Projected Touch Screen
Power Requirements	DC 12V (5A)
Power Consumption	TBA
Operating Temperature	0 to +50°C
Storage Temperature	-20 to +60°C
Relative Humidity	10% to 90% (Non-Condensing)
Backlight Life	30,000 hours
Housing Color	White
Housing Material	Metal
Weight	8.9 Kgs
Mounting Standard	VESA (100 mm)

2. Mechanical Drawing



(Manufacturer reserves the sole right to change the specifications without prior notice)  
(Touch screen will reduce the original luminance of the LCD display)