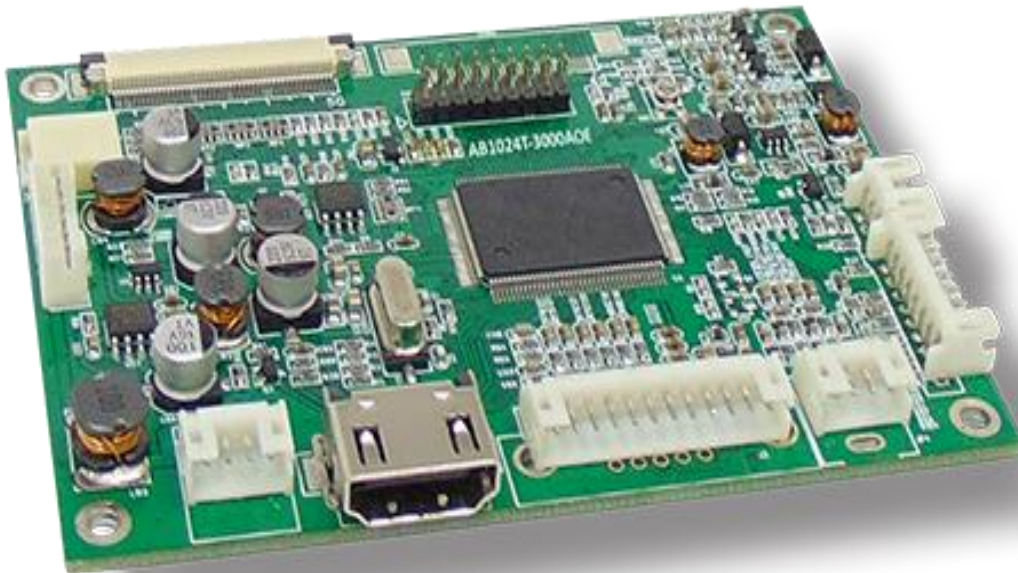




HIGHNESSTM

LCD - AD-CONTROLLER BOARD

Model No. AB1024T-3000AOE



Release Date
10th Sep 2020

THIS DOCUMENT CONTAINS PROPRIETARY INFORMATION WHICH IS SOLELY OWNED BY 'HIGHNESS MICROELECTRONICS PVT LTD'. ANY UNAUTHORISED COPY OR PRINTING OR PUBLISHING OF INFORMATION IN THIS DOCUMENT IN PART OR IN COMPLETE IS RESTRICTED.

HIGHNESS MICROELECTRONICS PVT LTD.

Email: sales@highnessmicro.com, URL: www.highnessmicro.com

Index:

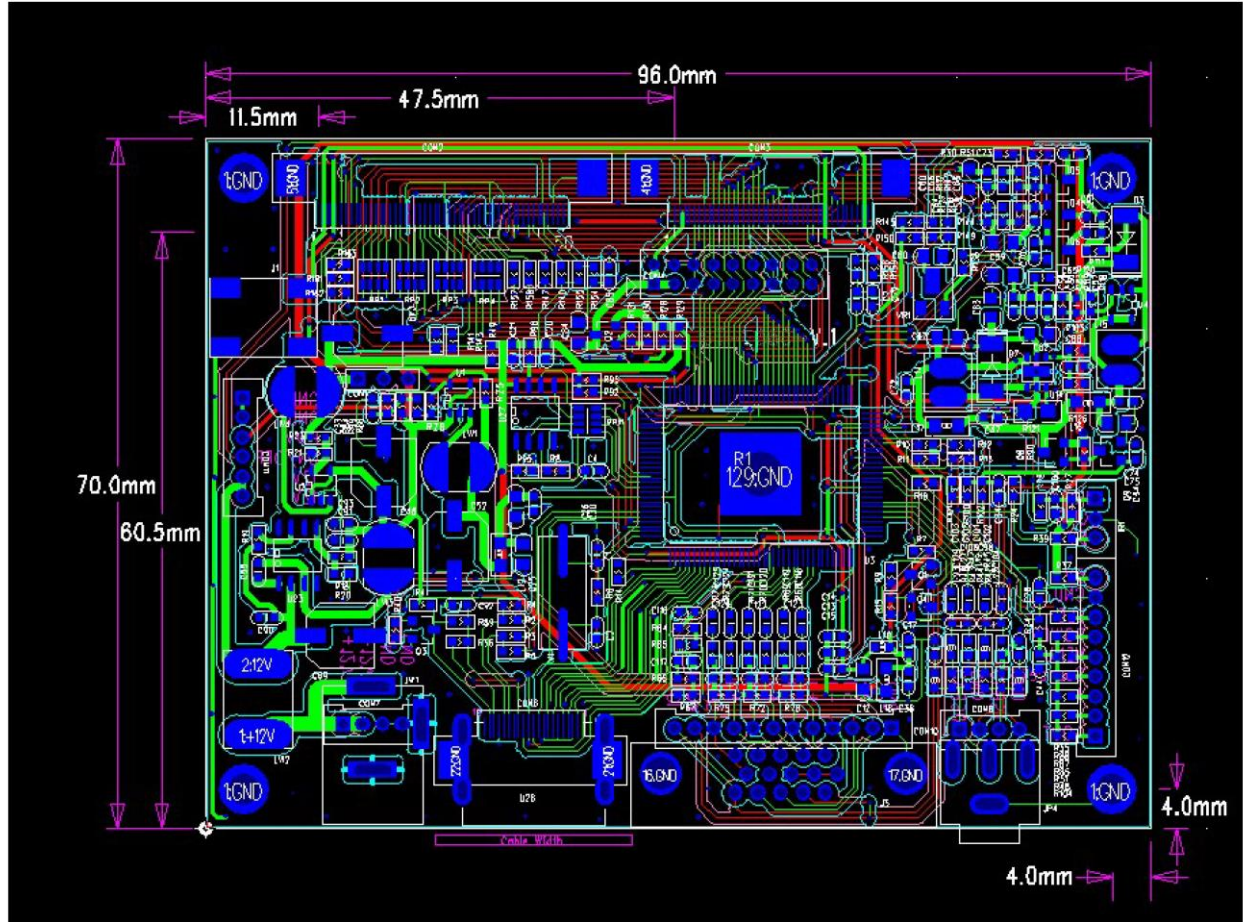
- 1} Specification of Ad-Board.....3
- 2} Dimensions of Ad- Board and4
- 3} Picture of Ad-Board5
- 4} Connector & Pin assignment.....6
- 5} Output Connector.....6
- 6} Input Connector.....7
- 7} Supported Resolutions8

1. Specification:

| | | |
|-----------------------|-------------------------------------|-------------------------------------|
| Model No. | AB1024T-3000AOE | |
| Chipset | 2662 | |
| Supported Resolution | PC-RGB | Up to 1024 x 768@60~70HZ |
| | HDMI | |
| | CVBS | |
| Power Supply | Power Requirement | Input Power 12V DC |
| | To Supply | 3.3V, 5V, 12V |
| | Manage | Power Consumable mode: Standby<0.5W |
| Key Functions | Power, Menu, Source, Down(+), UP(-) | |
| Terminal Input | PC-RGB Input | PH Connector |
| | HDMI | HDMI-19pin signal interface |
| | CVBS | PH Connector |
| Technical 's Output | To Panel | 1 FPC 50pin Connector |
| Operating Temperature | -10 ~ 60°C | |
| Storage Temperature | -20 ~ 70°C | |
| Humidity | ≤90% (Non-Condensing) | |
| Size | 96 (L) x 70 (W) mm | |

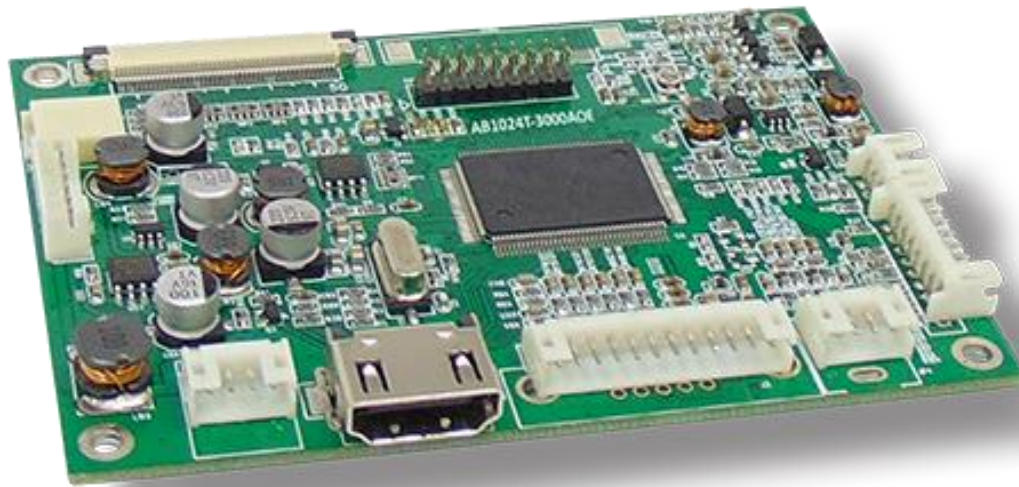
2. Dimension:

(i) Ad-Board:



3. Ad-Board Picture:

(i) Top View:



4. Connector & Pin assignment:

4.1 (I) Output Connection :(FPC Connector 50Pin): CN8

| Pin | Function | Pin | Function | Pin | Function | Pin | Function |
|-----|----------|-----|----------|-----|----------|-----|----------|
| 1 | VCOM | 11 | RXIN1- | 21 | RXIN3+ | 31 | LED- |
| 2 | VDD | 12 | RXIN1+ | 22 | GND | 32 | LED- |
| 3 | VDD | 13 | GND | 23 | NC | 33 | L/R |
| 4 | NC | 14 | RXIN2- | 24 | NC | 34 | U/D |
| 5 | RESET | 15 | RXIN2+ | 25 | GND | 35 | VGL |
| 6 | STBYB | 16 | GND | 26 | NC | 36 | NC |
| 7 | GND | 17 | RXCLKIN- | 27 | DIMO | 37 | NC |
| 8 | RXINO- | 18 | RXCLKIN+ | 28 | SELB | 38 | VGH |
| 9 | RXINO+ | 19 | GND | 29 | AVDD | 39 | LED+ |
| 10 | GND | 20 | RXIN3- | 30 | GND | 40 | LED+ |

4.2 Input Interface Details:

(I) EXTERNAL VGA INTERFACE (12 Pin):CN10

| Pin | Function | Pin | Function |
|-----|----------|-----|----------|
| 1 | GND | 9 | B+ |
| 2 | VS | 10 | GND |
| 3 | HS | 11 | SDA |
| 4 | GND | 12 | SCL |
| 5 | R+ | | |
| 6 | GND | | |
| 7 | G+ | | |
| 8 | GND | | |

(II) EXTERNAL HDMI INTERFACE (20 Pin):CN13

| Pin | Function | Pin | Function | Pin | Function |
|-----|--------------|-----|-------------|-----|---------------|
| 1 | HDMI Data 2+ | 8 | HDMI Clock- | 15 | HDMI Hot Plug |
| 2 | HDMI Data 2- | 9 | I2C CLOCK | 16 | +5V Power |
| 3 | HDMI Data 1+ | 10 | I2C Data | 17 | Ground |
| 4 | HDMI Data 1- | 11 | NC | 18 | Ground |
| 5 | HDMI Data 0+ | 12 | NC | 19 | RESET |
| 6 | HDMI Data 0- | 13 | Ground | 20 | +5V Power |
| 7 | HDMI Clock + | 14 | NC | | |

(III) CVBS Interface Details (4 Pin): CN8

| Pin | Function | Pin | Function |
|-----|----------|-----|----------|
| 1 | CVBS | 3 | CVBS1 |
| 2 | GND | 4 | GND |

(III) OSD Interface Details (9 Pin / 2.0):CN1

| Pin | Function | Pin | Function | Pin | Function |
|-----|----------|-----|----------|-----|----------|
| 1 | VCC | 5 | MENU | 9 | AOUT |
| 2 | GND | 6 | SOURCE | | |
| 3 | LED | 7 | LEFT | | |
| 4 | POWER | 8 | RIGH | | |

5. Inverter Interface Details (Connector 6 Pin/2.0): CN

| Pin | Function | Pin | Function |
|-----|----------|-----|----------|
| 1 | GND | 4 | On/off |
| 2 | GND | 5 | VCC_12V |
| 3 | +5V | 6 | VCC_12V |

6. Supported Resolution:

| |
|-------------------|
| 800 x 480 |
| 800 x 600 |
| 1024 x 600 |
| 1024 x 768 |